

**Instructions
for lifting
DN1200 and DN1500
Jacking Pipes**

PD 52 rev E

01/11/2013

1. Introduction

Lifting equipment supplied by Stanton Bona is tested as required by the Lifting Operation and Lifting Equipment regulations (LOLER), regulation 9.

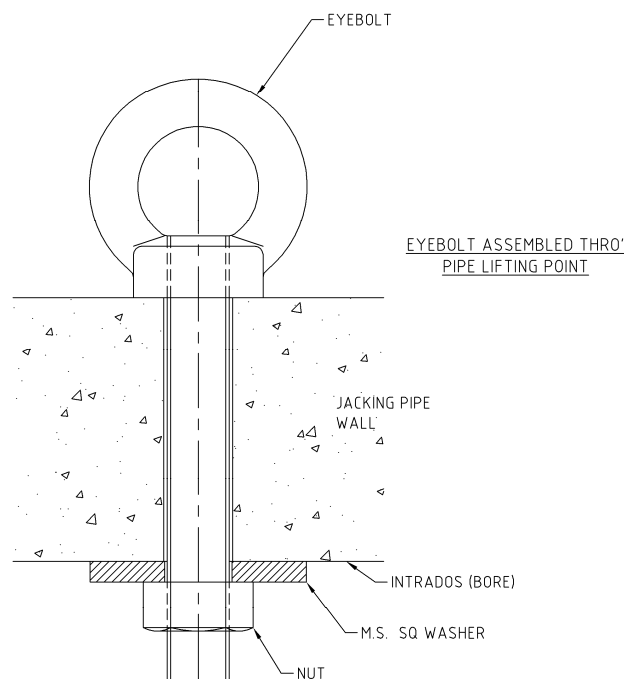
It is the responsibility of the user to ensure periodic in-service examinations by a Competent Person and that routine daily inspections are carried out.

Lifting operations must only be carried out by Trained Slings to a formal Lifting Plan which has been confirmed and accepted by a Competent Person.

HSE publication: INDG290 'Simple guide to the Lifting Operations and Lifting Equipment Regulations 1998' offers further guidance.

2. DN1200 and DN1500 Jacking Pipes

Stanton Bonna DN1200 and DN1500 jacking pipes are supplied with a single hole cast through the pipe wall to facilitate lifting. To provide a safe and efficient means of lifting, a suitably designed lifting eye is supplied, as shown.



SIZE	EYE BOLT	WASHER	SWL (t)
DN 1200	M30	10mm	4.0
DN 1500	M36	12mm	5.3

Weights

Size	Pipe	Weight (t)
DN1200	Standard	3.3
	Interjack Lead Pipe	2.1
	Interjack Tail Pipe	3.2
DN1500	Standard	5.0
	Interjack Lead Pipe	4.0
	Interjack Tail Pipe	5.0

Fitting the lifting eye

The lifting eye comprises of three components: a lifting eye, nut and steel plate washer. The lifting eye should be passed through the lifting hole from the outside of the pipe. From the inside of the pipe, fit the steel washer and then the nut.

Tighten the nut until the underside of the head of the lifting eye is in contact with the pipe wall. The nut should be tight enough to ensure contact between the pipe wall and the head of the lifting eye maintained.

Lifting the pipes

Pipes should be lifted using a single lifting chain to ensure vertical loading of the lifting eye. Under no circumstances should the lifting system be used to lift more than one pipe at a time or to aid jointing of pipes.

After lifting, the lifting eye must be removed and the lifting hole filled. Stanton Bonna provide a tapered concrete plug which may be grouted in to the lifting hole.

Interjack sets

Interjack sets are not fitted with lifting points.

These units should be lifted with suitably rated webbing lings. The rating of the slings should take in to account: the way the slings are to be used (basket lift or choke hitch); the weight of the pipe and the weight of additional equipment fitter to the pipe.

A test lift may be necessary to confirm that the sling is in the correct position to ensure the pipe hangs correctly.

Right to Change: The specifications given in this document are believed to be correct but are not guaranteed. Stanton Bonna reserve the right to alter any specifications given in accordance with its policy of continuous product development. All rights reserved.